

CONTINUOUS SOAKING AND HYDRAULIC CONVEYING SYSTEM

Soaking and washing soybeans increases protein extraction, reduces equipment wear, cleans the soybeans, and reduces flatulence-causing oligosaccharides. ProSoya's ST 2000 incorporates these features and permits optimal soaking and cleaning through its countercurrent washing system (patented). Whole beans are gently soaked, washed, and hydraulically conveyed without physical damage. The ST 2000 is best used in conjunction with ProSoya's *Bean Conveying System*, *Washing/Dewatering Augers*, and *Circulating Pumps*, which are optional.



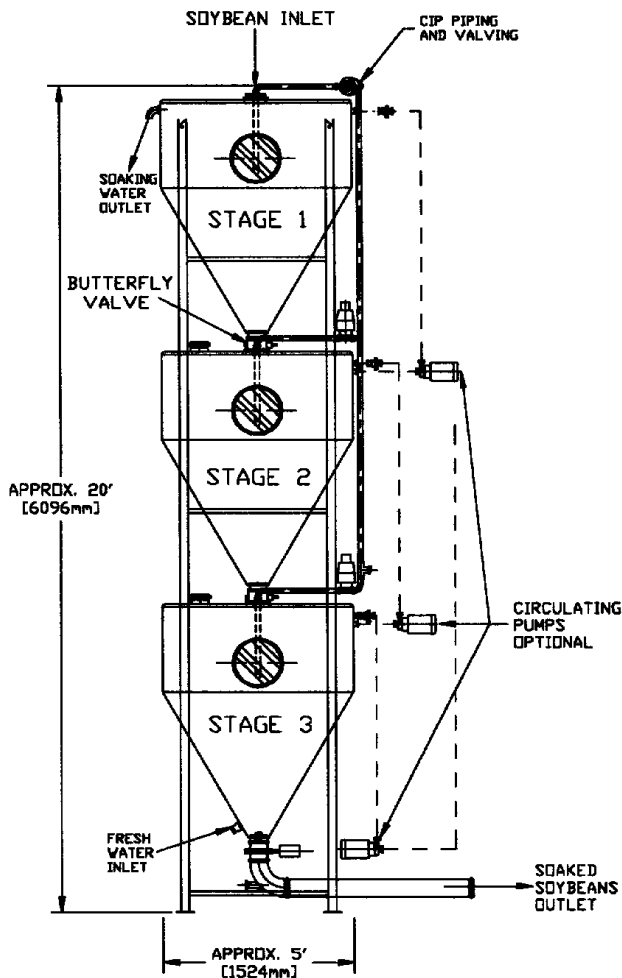
ProSoya's ST 2000

ADVANTAGES:

- ▶ Continuous soybean hydration system for up to 2000 L/h of soymilk production
- ▶ Countercurrent washing minimizes undesirable oligosaccharides
- ▶ Full CIP capability
- ▶ Accurate control of optimal soaking time
- ▶ Gentle handling prevents premature physical damage of soybeans
- ▶ Other products such as corn, and wheat can also be soaked

ST 2000

ProSoya Inc. has developed a three-tier tank system to hydrate soybeans for producing soymilk, tofu, etc. Soybeans enter the top of stage 1 and exit from the bottom of stage 3, after a predetermined soaking time depending on the soak water temperature. Counter-flow of water, from the bottom to top, maximizes cleaning and removal of undesirable oligosaccharides from the soybeans.



OPERATION

1. Soybeans enter the top of the system via a central opening.
2. The soybeans transfer to subsequent stages after a preset time.
3. Fresh soaking water enters the bottom stage, passes through the system, and exits from the top stage.
4. The fully soaked soybeans exit the last stage and are conveyed hydrostatically for processing into soymilk.

SPECIFICATIONS

▶ **Power Requirements:** 4 kW max. (Intermittent)

▶ **Soaking Capacity:** 400 Kg or Soybeans/h

▶ **Construction:**

- ▶ S.S.304 fabrication with sanitary finish
- ▶ Easy access clean lexan manways
- ▶ Robust sanitary butterfly valves

OPTIONS (See tech sheet St 2000-OPT)

- ▶ Bean Conveying System
- ▶ Washing/Dewatering Auger
- ▶ Circulating Pumps

